



CAPABILITY STATEMENT

...a strong team built on solid foundations

ABOUT MAINLAND CIVIL

Mainland Civil was founded in 1998 and has grown to be a highly regarded civil engineering company with competencies across all aspects of civil construction. The business offers a highly skilled operational work force, along with modern, reliable plant and equipment and technical services capabilities, including design, survey and systems management. This ensures we can deliver projects to the highest possible standards within budget and in accordance with required construction programs. Innovative project delivery and on-site methodologies are key factors in our success within a highly competitive industry. Mainland Civil has an enviable reputation within the industry for completing projects on time and on budget, without compromising quality, safety and environmental excellence.



ROBERT DAHAN

Executive Director

BE (Civil)

A civil engineer since 1984, Robert has had general manager and managing director roles with organisations responsible for delivering significant projects in both the private and public sectors. He has also been NSW and National President of the Civil Contractors Federation, making significant contributions to the development of the industry.



ANGELO FORTE

Executive Director

BE (Civil) Hons

A civil engineer since 1987, Angelo has a reputation within the industry of working closely with clients to develop time-saving and cost-effective solutions for some of the most challenging civil construction projects in Australia.



STUART MUIR

Managing Director

BE (Civil)

Graduating as a civil engineer in 1988, Stuart has progressed his career from Project Manager to Construction Manager with leading civil engineering companies in Australia and Asia. In 2015 Stuart was appointed as a Company Director and Managing Director in 2022.

CORPORATE GOVERNANCE & RESPONSIBILITY

Mainland Civil's Board and Management are committed to the principles of ethical corporate governance. We are constantly mindful of our responsibilities as guardians of the natural environment, while performing profitably in the built environment.

Our long-term goals include meeting ever-higher sustainability targets, improving conditions for our employees to ensure we are an employer of choice, and enhancing the environment for the benefit of the wider community.

Our commitment to this has been recognised through state and national construction excellence awards.

The success of our business is underpinned by strict adherence to meeting international standards relating to Quality and EHS for all stakeholders associated with our business activities.



MANAGEMENT TEAM



BRETT TALBOT

General Manager NSW/VIC
BE (Civil)

Brett graduated as a Civil Engineer in 1995. After relocating to Sydney, he joined a leading civil engineering contractor as a Site Engineer and progressed to Project Manager. After a brief secondment to the Sydney Olympics construction team, Brett joined Mainland Civil in 2000 and with more than 20 years' experience he now holds the position as General Manager for Mainland Civil NSW & VIC.



TYE BRIDGMAN

General Manager QLD
Dip Eng (CIVIL) Dip Blg (Construction)

Joining Mainland Civil's Sydney operations in 2002 as a Site Engineer, Tye acquired a wide range of skills working professionally on large CBD projects. As a result of his skills and expertise, he was given the task of establishing Mainland Civil in Queensland as General Manager in that state. Since taking on this role, he has been involved in the delivery of some of Australia's largest and most challenging CBD projects.



BOBBY JOVANOVSKI

Construction Manager NSW
BE (Civil)

Bobby joined Mainland Civil in 2012 as a Civil Engineer having worked in the demolition and construction industry both locally and abroad. Bobby combines an excellent understanding of client expectations and ways to achieve project outcomes with creative problem solving abilities and well developed interpersonal skills.



SAM HAZELTON

Construction Manager VIC
BE (Civil)

Since joining Mainland in 2007, Sam Hazelton has built a career at Mainland Civil from the ground up. Starting his career with us on site as a cadet engineer, rising through the management ranks.

Sam's experience and understanding of the Mainland values will be instrumental in his role to grow Mainland Civil Victoria.

Throughout his career with Mainland, Sam has managed our largest projects in the civil, infrastructure and demolition space.

While Sam's technical expertise and experience are self-evident, it is the people that are his real passion. Whether it be developing his own team or liaising with our valued clients to ensure their ongoing satisfaction.



DUNCAN SHEIL

Construction Manager QLD
BE (Civil)

Duncan has over 25 years' experience in the demolition and civil industry from the ground up to senior management. He has worked on projects across sectors from residential, commercial, industrial, mining and infrastructure. Duncan has gained experience in demolition, civil, asbestos, hazardous material and remediation. Since joining Mainland Duncan has been involved in some of Australia's largest and most challenging projects in both the civil and demolition areas of the company. Duncan's focus is to ensure that the delivery of projects across civil and demolition are always to the highest level as expected by our clients.

OUR MANAGEMENT TEAM HAS MORE THAN 200 YEARS OF COMBINED EXPERIENCE DELIVERING PROJECTS THROUGHOUT AUSTRALIA

MANAGEMENT TEAM



STEPHEN ANGELIS

NSW Estimating Manager
BE (Civil)

Stephen joined Mainland Civil in 2002 as a Senior Estimator and has been involved in all aspects of tendering and negotiating projects for 16 years, taking over as Estimating Manager in 2018.



FRANK CETINSKI

VIC Estimating Manager
BE Civil (Hons) MBA (With Merit)

Frank graduated with Class 1 Honours in his Civil Engineering Degree and later followed this with an MBA. After working with a leading construction firm in Sydney, Frank joined Mainland Civil over 20 years ago.

He has extensive experience in both Estimating and Project Management, always striving to provide the most effective solutions for our business partners.



KEVIN MITCHELL

Plant Manager

Kevin is a qualified plant mechanic within 25 years' experience in heavy plant and light vehicle fleet management. He has worked for Mainland since 2000 and is responsible for procurement, maintenance and service to ensure our fleet remains safe, up-to-date and reliable for all our operations and projects.



DARREN O'MEARA

QLD Estimating Manager
BE (Civil)

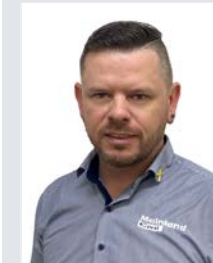
Continuing a family tradition in civil construction, Darren joined the Mainland team in 2007 and applied himself as a Site Engineer on projects spanning NSW, the ACT and QLD. Darren had a highly competent ability to drive new technology both within the construction team, but was given a role in estimating where he has developed his skills further to become the Queensland Estimating Manager. Now calling the Sunshine State home, Darren is responsible for the Queensland project procurement since 2012 and currently heads up a steadily-growing team of estimators.



MITCH COLE

National HSEQ Manager

Mitch graduated in 2008 with a Masters in Exercise Physiology and Bachelor of Education (PDPHE). After previous employment in teaching and Allied Health (Exercise Physiology and Injury Management), Mitch joined Mainland Civil in 2015 as Systems Coordinator. Mitch now holds the position as National HSEQ Manager, responsible for the coordination of workplace Health and Safety policies and procedures.

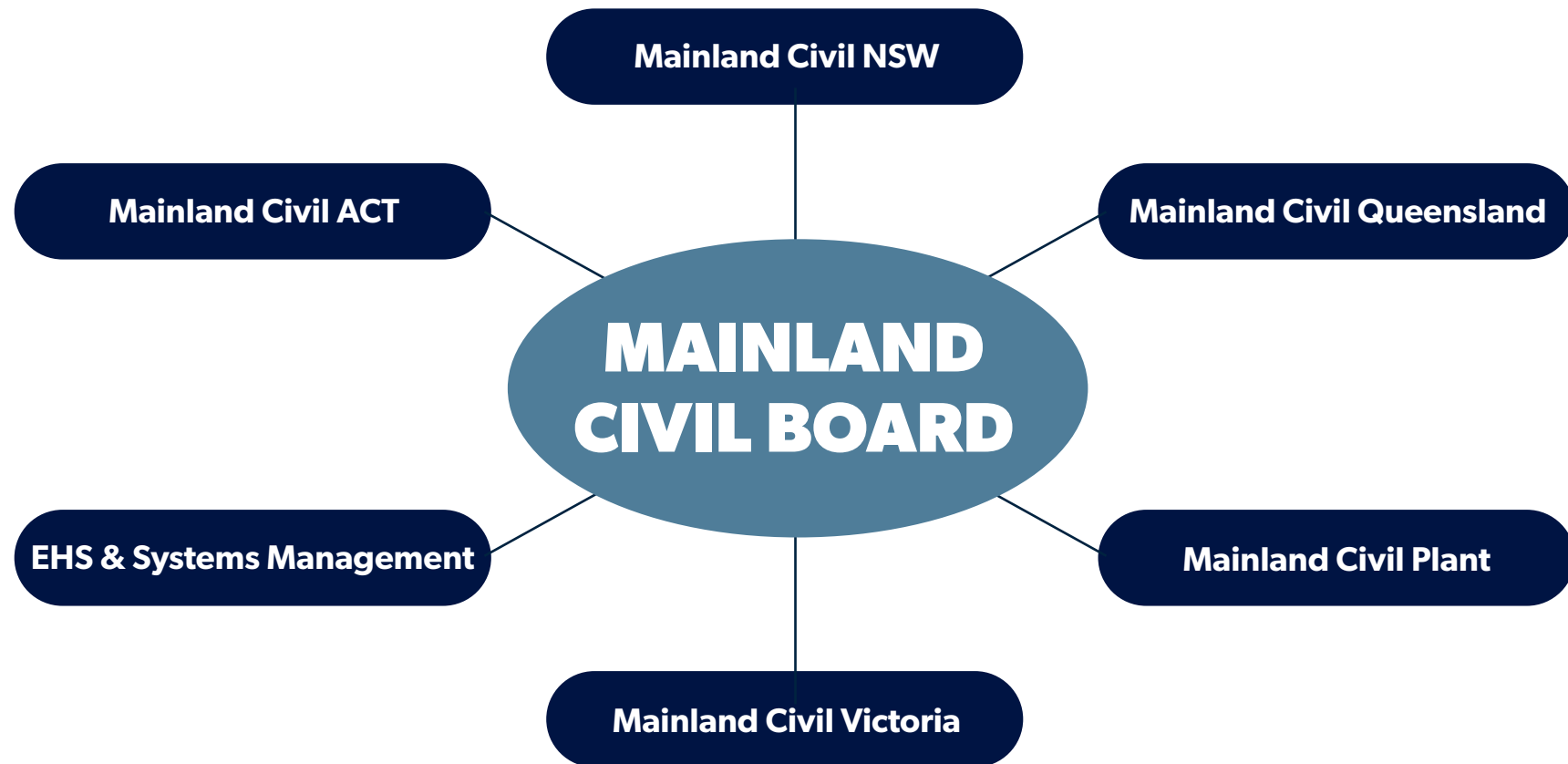


JAMES EDWARDS

QLD HSEQ Systems Manager

James has an extensive history in management within the project and construction industry, with over 15 years of experience in civil construction, environmental remediation, asset infrastructure and telecommunications sectors. James joined Mainland Civil January 2022 and his HSEQ discipline is drawn from his Diploma in WHS as well as 9 years of safety leadership experience in providing technical expertise and HSEQ strategies to projects and operations. With a high level of interpersonal skills, James is a great advocate in Safety leadership, focusing on people's well-being, health & safety, and safe work practices.

BUSINESS STRUCTURE



"At Mainland Civil, we continue to strategically expand our business structure and locations throughout Australia to satisfy client requirements without compromising on the quality of our business or workmanship in project delivery"

PEOPLE & LOCATIONS

OUR PEOPLE

Key to the success of our business and our ability to deliver outstanding projects is engaging professionally qualified staff to manage all projects. Our team includes highly qualified, committed and motivated civil engineers, project managers and project engineers.

We take pride in investing in our people – whether management and operational staff – through training and education to ensure continuing development for all employees. We support our workforce and strive to be an employer of choice in the industry. Mainland Civil is committed to the safety principle of “zero harm” for our employees, all persons with whom we work, and the wider community.



• Offices/Current Work Locations

CAPABILITIES

1. EXCAVATION, SHORING, UNDERPINNING & FOUNDATIONS

Mainland Civil has developed a reputation as a specialist in the delivery of inner city developments entailing complex earthworks and shoring requirements. We have a proven history of completing some of the most complex and iconic civil projects in Sydney, Brisbane and the Gold Coast. We are currently expanding this part of our business to Victoria to meet demand from key business partners, including Australian and international "Tier 1" builders and contractors.

2. ROADS & HEAVY DUTY PAVEMENTS & AIRPORTS

Mainland Civil has many years' experience on various types of road construction projects, ranging from local road networks in residential subdivisions to heavy-duty pavements in both flexible and non-flexible materials. Our projects have included working within industrial developments, container terminals, ports and airports. In addition, we have frequently provided alternative designs to clients, resulting in significant savings for the project and client. Mainland Civil is also prequalified with various government departments including main roads authorities across Australia.

3. RAIL PORTS & MARINE

Mainland Civil's delivery of major rail, ports and marine projects includes shipping berths and freight terminals incorporating rail construction, as well as extensive heavy duty pavements for road freight operations. Many of these projects have been completed in high-security working environments without incident and to the highest safety and quality standards.



THE PROOF OF MAINLAND'S CAPABILITY & SUCCESSFUL PROJECT DELIVERY IS THE DEEP RELATIONSHIPS WE BUILD WITH OUR BUSINESS PARTNERS ACROSS A BROAD SPECTRUM OF INDUSTRY SECTORS



4. RESIDENTIAL, INDUSTRIAL & COMMERCIAL PRODUCTS

Mainland Civil has completed numerous residential, industrial and commercial projects, including bulk and detailed excavation works, installation of water, sewer, drainage, electrical and communications services and infrastructure, road construction along with public amenities such as parks, lakes, playing fields and cycle ways.



5. CONTAMINATED LAND MANAGEMENT, ENVIRONMENTAL & REMEDIATION

Mainland Civil has a significant level of expertise in this sector of industry, including the rehabilitation of heavily degraded and contaminated land sites, disused tip sites, polluted industrial sites, waterways and wetlands reconstruction, and site regeneration. This work has been recognised with the company winning environmental sustainability and construction excellence awards at both state and national levels.



6. MINING, RESOURCES, WATER & ENERGY PROJECTS

Mainland Civil has completed projects within mine sites, mills, steel works, fuel storage facilities, water recycling plants and on pipeline projects. These works have included bulk excavation and materials processing, construction of haul roads and road networks, construction and repair of pavements, construction of hard stand and industrial sites within mine sites, concrete works and installation of detailed infrastructure.

The company has a proven record of excellence and expertise in working in these types of projects and sites, enhanced by our significant capability in system management and EHS compliance to meet mining and resources site requirements.

KEY PROJECTS

EXCAVATION, SHORING, UNDERPINNING & FOUNDATIONS

1. QUEENS WHARF (VALUE \$65 MILLION)

The Queens Wharf Project is a \$3.6 billion development of a new entertainment hub within Brisbane, encompassing over 26 hectares across land and water.

Mainland Civil, as part of a \$65 million dollar early works package were engaged to assist with demolition of existing structures directly adjacent to heritage buildings and excavate over 430,000m³ of various materials including very high strength rock.

Mainland Civil also completed the formwork, steel reinforcement and concrete works to the lift core and pad footing foundations and B5 slab on ground to allow a seamless transition from early works to the main works.



2. PARRAMATTA SQUARE (VALUE \$50 MILLION)

Part of the \$2.7 billion Parramatta Square development, this site is located in the centre of Parramatta, the project comprises three commercial towers and shared community areas.

Mainland were engaged on an early works package to remediate the 3 hectare site, install over 8000m² of diaphragm wall up to 15m deep and then bulk excavate over 300,000m³ of various materials including asbestos, acid sulphate soils and general solid waste.

The site provided various challenges including works next to heritage buildings, various stakeholders and consistent interactions with local authorities and neighbours. The close proximity to the rail line required constant monitoring and co-ordination allowing for minimum deflection and movement during the excavation process.

The site also involved staged handover to builders throughout the project requiring coordination of shared access and areas.



A SELECTION OF OUR LANDMARK PROJECTS

A full list of our company's projects can be found on our website www.mainlandcivil.com.au

3. 300 GEORGE STREET (VALUE \$24.3 MILLION)

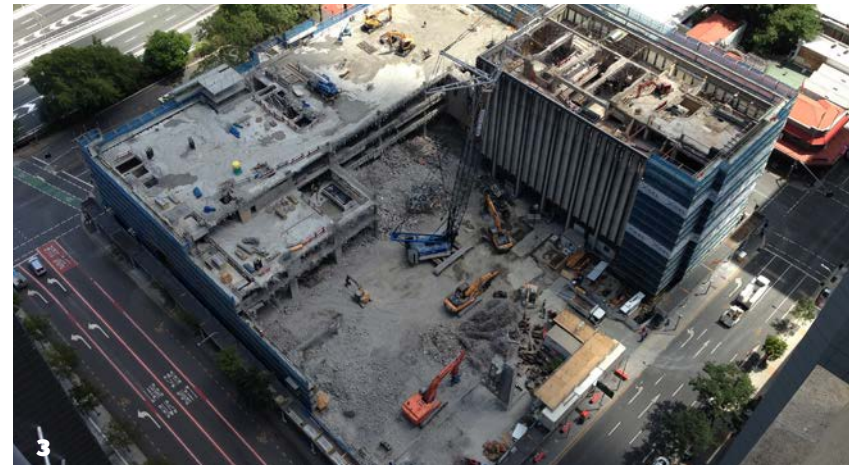
300 George St was the old law courts site for Brisbane. With the relocation of the courts the site was purchased for development by the Shayher group.

Existing building was over three main buildings over seven storeys.

Mainland undertook the demolition and subsequent civil works for the project. Demolition involved three main buildings in a conventional top down demolition. Structures were predominately reinforced concrete with panel façades.

Civil works involved bulk excavation of 140,000m³ of material over an entire city block in the middle of Brisbane. Material removed was clay and rock with the majority being rock. The excavation was to a depth of 23 metres below existing street level, which posed a number of issues with material movement out of the project.

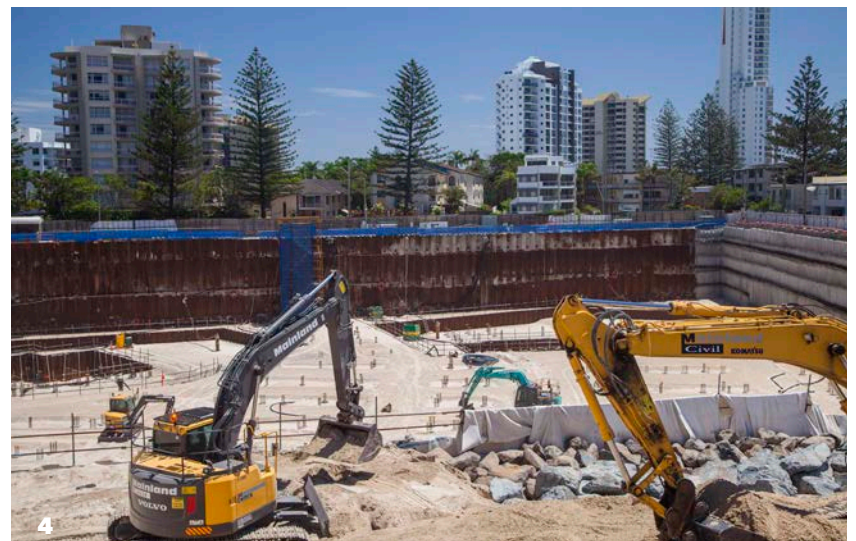
Detailed excavation of three main lift cores and associated footings, services trenches main lift core for residential was over 6.5 metres below bulk excavation and involved blasting rock to form lift core.



4. JEWEL, GOLD COAST (VALUE \$11 MILLION)

The Jewel Development consists of the construction of three multistorey towers across the 10,000m² site including 46 storey, 40 storey and 34 storey towers with a three level basement below ground level.

The basement excavation required the removal of approximately 110,000m³ of sand and 16,000m³ of asbestos contaminated sand. Sheet and contiguous pile shoring walls supported by sand anchors facilitated the excavation works along with a steel brace system on the north east corner. In addition to this, a seawall was constructed adjacent to the site to protect against long term beach erosion. The foundation piling works involved the installation of 470 CFA piles within the tower cores and beneath the podium.



KEY PROJECTS

5. INFINITY TOWER, BRISBANE (VALUE \$9.0 MILLION)

This development presented Mainland Civil with one of its most challenging excavations in the Brisbane Central Business District. This 30m deep, nine-level basement project, incorporating core excavation through massive unfractured rock, presented Mainland Civil with significant challenges on a tight and difficult program. To overcome these challenges, innovative drilling and blasting techniques were successfully developed for this site. This previously unused methodology was successful in maintaining the program and ensuring client requirements were achieved.

6. 1 WILLIAM STREET (VALUE \$8.8 MILLION)

The excavation of over 68,000m³ of rock & fill across a 7000m² site reaching three basements deep was required to facilitate the construction of a 45 storey high rise in the heart of Brisbane adjacent to the Brisbane river.

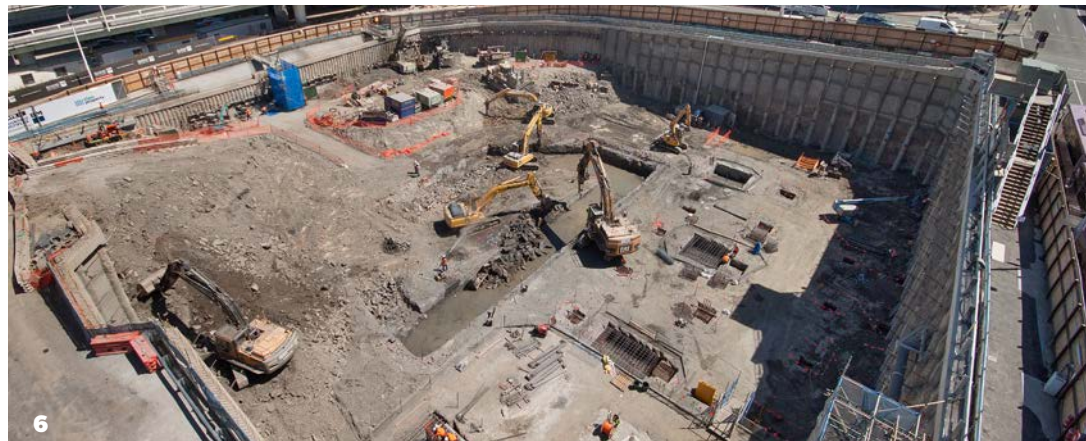
Over 18,000m³ of contaminated material was removed to decontaminate the site. The site is located in a highly sensitive heritage area with ruins of buildings discovered dating back to 1850, the excavation was carried out under the supervision of archaeologists to ensure the history of the site was recorded.

7. CENTRIUM APARTMENTS, CHATSWOOD (VALUE \$8.0 MILLION)

The Centrium Apartments is one of Meriton's largest serviced apartments, retail and commercial highrise buildings located between Thomas Street and Albert Avenue, Chatswood.

Mainland Civil was contracted to undertake the design and construction of all perimeter shoring including piling and shotcreting to the full depth of excavation.

Bulk excavation involved the removal of approximately 75,000m³ of clay and shale using a purpose built steel and concrete loading platform.





8. SOUL DEVELOPMENT, SURFERS PARADISE (VALUE \$8.0 MILLION)

The \$850 million Soul residential tower and retail precinct in Surfers Paradise is set to become a Gold Coast icon in luxury living and retail shopping. Mainland Civil was awarded contracts to excavate and decontaminate the site, as well as constructing large-diameter bored piers and retaining structures. Rehabilitation of existing diaphragm walls, design and construction of cut-off walls, dewatering and sensitive environmental controls completed the scope of works for this landmark project.

9. ORACLE, BROADBEACH QLD (VALUE \$7.0 MILLION)

This three-level basement excavation included the removal of 130,000m³ of sand, which was then screened and placed on the beach for the benefit of Gold Coast City Council and the community. The Oracle Development is the largest residential excavation to take place on the Gold Coast, requiring almost 6,000m² of steel sheet piling, and an entire city block of deep well dewatering.

10. COVE APARTMENTS, ST PATRICK'S CHURCH (VALUE \$5.0 MILLION)

Mainland Civil's work on the Cove Apartments in Harrington Street, Sydney, included bulk

excavation, shoring and underpinning, as well as quarrying yellow block sandstone. The work involved excavation beneath the heritage-listed St Patrick's church hall, requiring underpinning of the structure. This was not only a construction constraint, but also a serious potential safety hazard. It was an extremely confined area in which to operate machinery, with the vibrations from such works having the potential to damage the historic hall and nearby buildings.

In recognition of Mainland Civil's protection of the structure and successful completion of the project without incident and to the satisfaction of the client, the Cove Apartments were awarded a CCF Earth Award for Construction Excellence.

11. UNO TOWER, MELBOURNE (VALUE \$3.5 MILLION)

The UNO Tower Project at 111 A'Beckett street is a 64 storey residential tower in the Melbourne CBD containing 634 apartments with an approximate project value of \$215 million.

Mainland was engaged by Probuild for an early works package that included bulk excavation, shotcrete, anchors, detail excavation and all in ground concrete works.

The 1750m² site contained archaeological significance, which combined with the presence of contaminated soils, presented sequencing

KEY PROJECTS

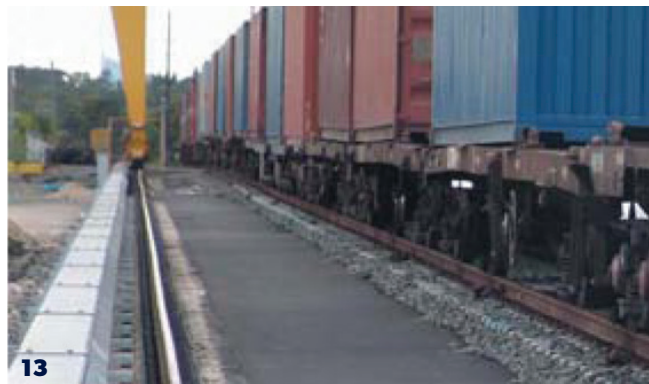
and programing problems. In conjunction with Probuild, Mainland Civil were able to develop sequencing and methodology strategies which minimised the time and cost implications.

The bulk excavation contained approximately 10,000m³ and the shoring for the two-level basement included 1,000m² of shotcrete wall and 88 temporary rock anchors. The inground concrete works also encompasses a 920m³ raft footing.

12. 393 MACAULAY ROAD, KENSINGTON VIC (VALUE \$1.2 MILLION)

393 Macaulay Road project consists of 8 levels, 73 apartments “Rent to Own” development for Assemble Communities in the Melbourne suburb of Kensington.

Mainland was engaged by the Descon Group to demolish and remove the existing warehouse on site and retain its heritage façade by the construction of an internal steel framework. Mainland Civil also undertook the bulk and detail excavation which included the removal of 5500m³ of material.



ROADS & HEAVY DUTY PAVEMENTS & AIRPORTS

13. SYDNEY FREIGHT TERMINAL, CHULLORA (VALUE \$13 MILLION)

The project required the construction of 45,000m² of heavy duty pavement capable of withstanding 100 tonne axial loads. As a fully operational inter-modal container terminal, this project required detailed programming and staging to avoid any disruption to terminal operations. The construction of 1400m of heavy duty rail track, 500m of concrete reinforced gantry crane rail, along with associated power, hydraulic and communication services completed the scope of works.

14. MENANGLE ROAD, DOUGLAS PARK (VALUE \$5.5 MILLION)

This project for BHP Billiton and Illawarra Coal involved the construction of 2km of a new access road and the re-alignment of the existing Menangle Road, plus construction of an intersection, slip and turning lanes to create access for drilling rigs to drill a new ventilation shaft being constructed for future mine expansion. Other elements of the works included a 12m cut through hard



15



16



17



18

rock, approximately 100m³ of cut to fill and the construction of three bentonite-lined detention dams. The project was successfully completed under strict mine site safety requirements and procedures.

15. KINGSFORD SMITH AIRPORT, SYDNEY (VALUE VARIOUS \$1 MILLION TO \$5 MILLION)

Project works at Sydney Airport have included detailed excavation for building construction as well as heavy duty pavements and apron works. These works have been completed under strict security requirements and have also included installation of infrastructure for drainage, electrical and communications.

16. KURNELL ROAD, SYDNEY (VALUE \$2.2 MILLION)

This project included the construction of an industrial subdivision on a sand site, with the scope of works including the widening of Captain Cook Drive to RMS specification using flexible pavements. All internal road construction was constructed using concrete rigid pavements. Other internal subdivision works included cut-to-fill earthworks, core-filled block retaining walls, construction of a wetlands and all associated infrastructure.

17. SHELLHARBOUR ROAD, SYDNEY (VALUE \$2.0 MILLION)

This project, which included the widening of Shellharbour Road and construction of a slip lane, was constructed under live traffic along a busy road. Mainland Civil was required to design and implement a traffic management plan and install traffic signals to a three-way intersection. The scope of works also included kerbs, crossings and footpaths and road construction to NSW Roads and Maritime Services (RMS) specifications.

RAIL PORTS & MARINE

18. PORT KEMBLA MULTI-PURPOSE BERTH, NSW (VALUE STAGE 1 - \$25.8 MILLION, STAGE 2 - \$12.4 MILLION)

Stage 1 consisted primarily of the construction of over 70,500m² of heavy duty pavement, 113,500m² of truck duty pavement and 8500m² of car duty pavement, including all associated hydraulic, electrical and communication services. By meeting the project's tight program requirements and consistently producing high quality finished work, Mainland Civil was awarded a negotiated contract to construct the second stage, including a further 153,000m² of truck duty and car duty pavement.

KEY PROJECTS

19. PORT BOTANY FREIGHT TERMINAL, SYDNEY (VALUE \$15 MILLION)

This project required complete rebuilding of heavy duty pavement and facilities for Patrick Stevedores' flagship container terminal at Port Botany. Staging and critical path programming were paramount to ensuring continuous operation of this busy port facility. Alternative pavement design and innovative construction methods enabled Mainland Civil to procure the initial contract, with successful completion of the early stages resulting in additional contract awards to the present value of \$15 million.

20. OAK FLATS RAIL & BUS INTERCHANGE, NSW (VALUE \$4.5 MILLION)

Part of a major upgrade to service the Shellharbour local government region, this project involved the construction of a new railway station, complete

with access roads, commuter parking, buildings and bus interchange. Platform construction and service diversions were carried out under strict OHS compliance and State Rail safety procedures while maintaining road and rail traffic flow. The unique station architecture incorporated a combination of steel, glass masonry and timber construction.

21. RAIL FREIGHT HANDLING FACILITY, COOPERS PLAINS, QUEENSLAND (VALUE \$4.0 MILLION)

This project required the upgrading and reconstruction of rail freight facilities and hardstand pavements for heavy duty forklift and transport access. Our scope of works included heavy duty concrete and segmental paving (6000m²), rail infrastructure works, electrical services and light towers and stormwater reticulation, as well as the removal of hazardous

materials and refurbishment of office and administration buildings.

The works were completed within program and budget to strict EHS controls.

22. CLYDE TRANSFER TERMINAL HARDSTAND UPGRADE, SYDNEY (VALUE \$3.65 MILLION)

The Clyde Transfer Terminal project involved the upgrade and extension of existing pavements within Veolia Environmental Services' waste transfer facility. Staging and programming of the works were imperative in ensuring the continuous operation of this busy facility. Mainland Civil's scope of works included the demolition and excavation of existing pavements, subgrade improvement by impact rolling, stormwater works, concrete works and heavy duty pavement construction.



MAINLAND CIVIL RECOGNISES THAT REPUTATION IS OUR MOST VALUABLE ASSET

RESIDENTIAL, INDUSTRIAL & COMMERCIAL PRODUCTS

23. PACIFIC FAIR SHOPPING CENTRE REDEVELOPMENT (VALUE \$10.0 MILLION)

The Pacific Fair Shopping Centre Redevelopment project required the bulk excavation of over 80,000m³ of sand including 18,000m³ of acid sulphate soil beneath the redeveloped shopping centre. The project also involved the construction of a 500mm thick piling platform across the 37,000m² site as well as internal access roads.

24. LONG BAY PRISON REDEVELOPMENT (VALUE \$9.0 MILLION)

The Long Bay Prison redevelopment involved the construction of two new hospitals within the existing correctional facilities. A unique site security system and strict EHS controls all added

to the challenge for the site construction team. Mainland Civil's scope of works included asbestos removal, site decontamination, earthworks, and construction of all roads and infrastructure services.

25. SHERWOOD BUS DEPOT, BRISBANE (VALUE \$5.0 MILLION)

This facility handles over 700 bus movements each day, incorporating cleaning, maintenance and refueling facilities. The upper soil layer of the site was generally uncontrolled fill which required high energy impact compaction to reduce long-term settlement issues. The project included 125,000m³ of material imported, placed and compacted under Level 1 supervision and 500m² of crib walls up to 3.6m high, adjacent to neighbouring properties. Some 15,000 tonnes of concrete was diverted from landfill, crushed and used as base course in lieu of quarried materials.

26. TOWRADGI, NSW (\$2.4 MILLION)

This project involved the construction of a residential subdivision. Key features of the project included the construction of noise walls to improve the amenity for residents, as well as construction of a roundabout at the entry to the estate and cut in to an arterial road. This 50-lot subdivision included construction of significant services, including high-voltage electrical supply and was constructed to the client's complete satisfaction, both within budget and within a tight construction program.

27. ANGLEWOOD ESTATE, BURRADOO, NSW (VALUE \$2.0 MILLION)

Anglewood House was built on a magnificent country estate in 1898 as a Queen Ann-style country mansion. Mainland Civil was contracted to develop the 17 acre estate for 20 country



KEY PROJECTS

properties while maintaining the iconic cultural and heritage characteristics of the site. The outcome was an elite estate for the discerning buyer.

CONTAMINATED LAND MANAGEMENT, ENVIRONMENTAL & REMEDIATION

28. SYDNEY UNIVERSITY – CENTRE FOR OBESITY, DIABETIC & CARDIOVASCULAR DISEASE (VALUE \$40 MILLION)

This larger scale development at Sydney University for The Centre of Obesity, Diabetic and Cardiovascular Disease (CODED) involved the installation of secant piles and entire retaining structures in water-charged ground. The site

was heavily contaminated with asbestos, lead, zinc, phenol fuels and acid sulphate soils. Bulk earthworks included the removal of all contaminated material from site – with acid sulphate soils treated on site prior to removal. This allowed for the remainder of the excavation in shale to be treated as Virgin Excavated Natural Material (VENM). The project also included services diversion of water assets and reconstruction of playing fields.

29. LIGHT HOUSE, DEE WHY (VALUE \$30.5 MILLION)

This project involved the redevelopment of the existing Dee Why Town Centre featuring two 20 storey towers totalling 350 residential apartments and commercial outlets with basement parking.

Mainland Civil's scope of works included; bulk excavation, dewatering, shotcrete shoring, anchoring support works and detail excavation. A major challenge experienced on this project was dewatering the high groundwater table in saturated clay soils. In dealing closely with the client and EPA Mainland was able to implement a contamination management plan to enable the remediation of 170,000m³ of soils.

30. GREEN SQUARE TOWN CENTRE, SYDNEY (VALUE \$15.0 MILLION)

The Green Square Town Centre site forms part of a historical commercial/industrial site which was a former quarry, landfill and incinerator. Working alongside Mirvac, Mainland was able to deliver a successful remediation strategy together with



A SELECTION OF OUR LANDMARK PROJECTS

A full list of our company's projects can be found on our website www.mainlandcivil.com.au

extensive earthworks and shoring components including CFA piles combined with jet grout columns. A final concrete blinding capping layer was installed to complete the remediation.

31. TEMPE LANDS REHABILITATION, SYDNEY (VALUE \$6.0 MILLION)

Tempe Lands, a 47 hectare uncontrolled rubbish tip for 70 years, is located 10 km south of the Sydney CBD. Marrickville Council invited tenders to provide a remediation strategy to turn this environmental disaster into a productive commercial and recreational area. Mainland Civil's tender, although ranked third lowest, was chosen on the basis of offering the council best value for money. Elements of the project included bentonite cut-off walls, extensive

earthworks remodelling and the importation and placement of 200,000m³ of validated clean fill for capping and aesthetic reshaping. Eco-sensitive wetlands, roads, services and a golf driving range completed this environmentally sensitive project.

32. LUNA PARK, MILSONS POINT, SYDNEY (VALUE \$6.0 MILLION)

This controversial and politically sensitive major redevelopment required an extensive traffic management plan to implement the excavation and removal of 60,000m³ of sandstone and contaminated materials. Under the watchful eye of the local Mayor, North Sydney City Council and the general public, the excavation was completed on program and without major incident.

Demolition, shoring and service relocation, along with extensive dewatering and environmental controls, completed this landmark project.

33. VICTORIA PARK, ZETLAND, SYDNEY (VALUE \$5.0 MILLION)

Landcom NSW required the 27 hectare former Victoria Park Naval Supply Centre to be remediated to satisfy requirements of the National Environmental Health Forum 'D'. Mainland Civil was awarded the contract for the remediation of this major urban renewal project, with works involving the removal of solid, industrial and hazardous waste, as well as on-site treatment incorporating both stabilisation and bioremediation techniques.

31



32



33



KEY PROJECTS

34. BLACKWELL STREET WETLANDS, QUEENSLAND (VALUE \$1.5 MILLION)

This project for Logan City Council included sewer diversion, earthworks, stormwater infrastructure and preliminary erosion and sediment controls to provide flood resistance and water quality improvements to the local catchment. The site is located at the choke-point of a 75 hectare catchment,



which resulted in flooding every 2-5 years. The works were designed to provide sufficient stormwater detention to reduce the chances of this flood recurrence to a 1-in-50 year event. Mainland Civil's scope of works underwent extensive review at the commencement of the project, when materials found on-site were deemed not suitable for use. Our site management team, in liaison with Logan City Council, was able to devise a cost-effective means of making use of the existing materials to ensure project objectives were preserved and met.

MINING, RESOURCES, WATER & ENERGY PROJECTS

35. BLUESCOPE STEEL RAW MATERIALS PLANT, NSW (VALUE \$3.1 MILLION)

Bluescope Steel required the construction of concrete foundations and footings at its raw materials plant for the construction of a materials processing facility. Another key aspect of this project involved the construction of a 4m high, 200m long retaining wall through the middle of the stockpile area, using pre-cast concrete panels. The plant remained operational throughout construction, with minimal disruption from construction activities.



THE MAINLAND CIVIL TEAM SHARES A SOUND UNDERSTANDING OF THE RELATIONSHIP BETWEEN COST, QUALITY AND DELIVERY OF DISPUTE-FREE PROJECTS

36. BHP MINE SITES, VARIOUS LOCATIONS (VALUE \$3.0 MILLION)

Mainland Civil has constructed several projects for BHP Billiton around Australia. These have included road construction, slip lanes and access roads, construction of heavy duty pavements for hard stand using both flexible and rigid pavements, construction of sedimentation ponds to capture water for use in drilling works, demolition and pavement repairs. These projects have been constructed in operating plants without incident under strict minesite regulations and plant requirements.

37. BP MEGAPLEX, QLD (VALUE \$2.1 MILLION)

The BP Megaplex fuel refinery at Binkenba required the construction of internal roads, bund walls for the fuel facilities, and stormwater infrastructure. All works needed to be constructed to the highest-standard EHS and quality systems under the strict requirements of the client. Further challenges in this project included the requirement to work around in situ critical infrastructure – including live fuel lines. Mainland Civil received high praise from the client on completion of this project without incident.

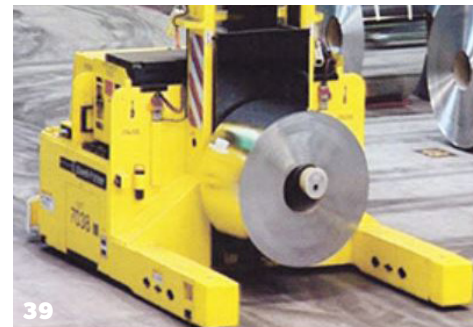
38. BLUESCOPE STEEL PRIMARY YARD, NSW (VALUE \$2.0 MILLION)

This project included the construction of concrete foundations for Bluescope Steel's conveyor systems raw materials handling plant. The project involved excavation and construction of footings in close proximity to essential line services and within the confines of an operating materials processing facility. This project highlights Mainland Civil's capability and willingness to work with our client and maintain strong working relationships.

39. BHP TIN MILL, NSW (VALUE \$1.2 MILLION)

This project included the construction of new and refurbishment of existing pavements within an operating plant, which created considerable logistical challenges for the management team to overcome. Pavement types included

heavy duty concrete pavements constructed to tight tolerances; essential for the operation of the new automated plant in the mill. Mainland Civil also used innovative techniques to ensure minimal dust creation.



TESTIMONIALS & BUSINESS PARTNERS

“Mainland’s combination of project personnel, price and programme provided them with the competitive advantage to secure this contract. Throughout the performance of the works, Mainland Civil showed dedication to the performance and quality of the works and worked cooperatively with both Fielder Engineers and designers and project managers. The constructed product has met or exceeded the specified requirement and at all times through the delivery of the project Mainland Civil have met their responsibilities and commitments without reservation.”

AAT Port Kembla
Peter Fielder, Fielder Engineers

“Mainland worked to a high standard of quality and timely delivery whilst maintaining open communications.”

UNSW Campus
Laurie Foy, Brookfield Multiplex

“We have no hesitation in engaging Mainland Civil as they always deliver without dispute.”

Kingston Apartments, ACT
Alex Scionti, Morris Property Group

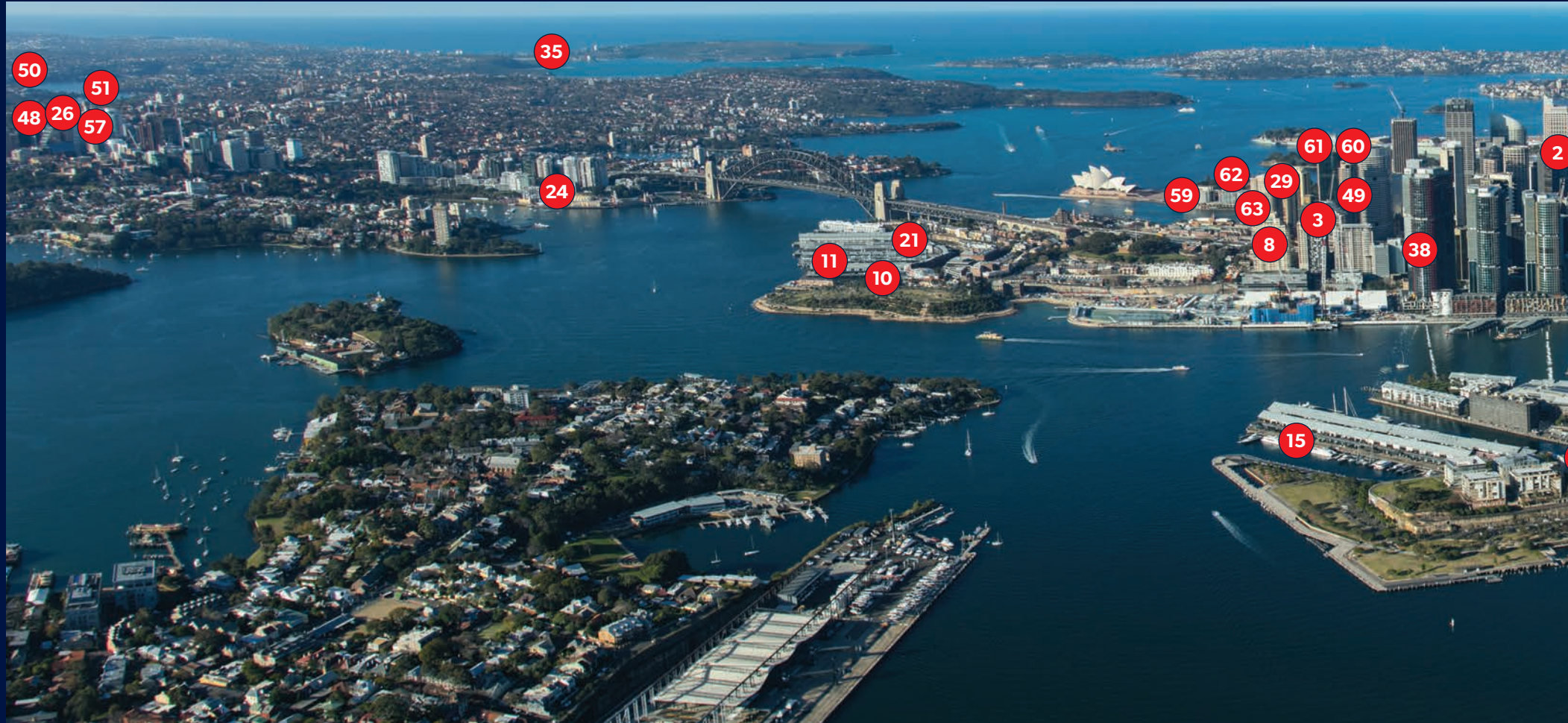


**AT MAINLAND CIVIL, WE KNOW THAT TO BUILD A STRONG TEAM,
STRONG RELATIONSHIPS MUST REST UPON SOLID FOUNDATIONS**

OTHER PROJECTS

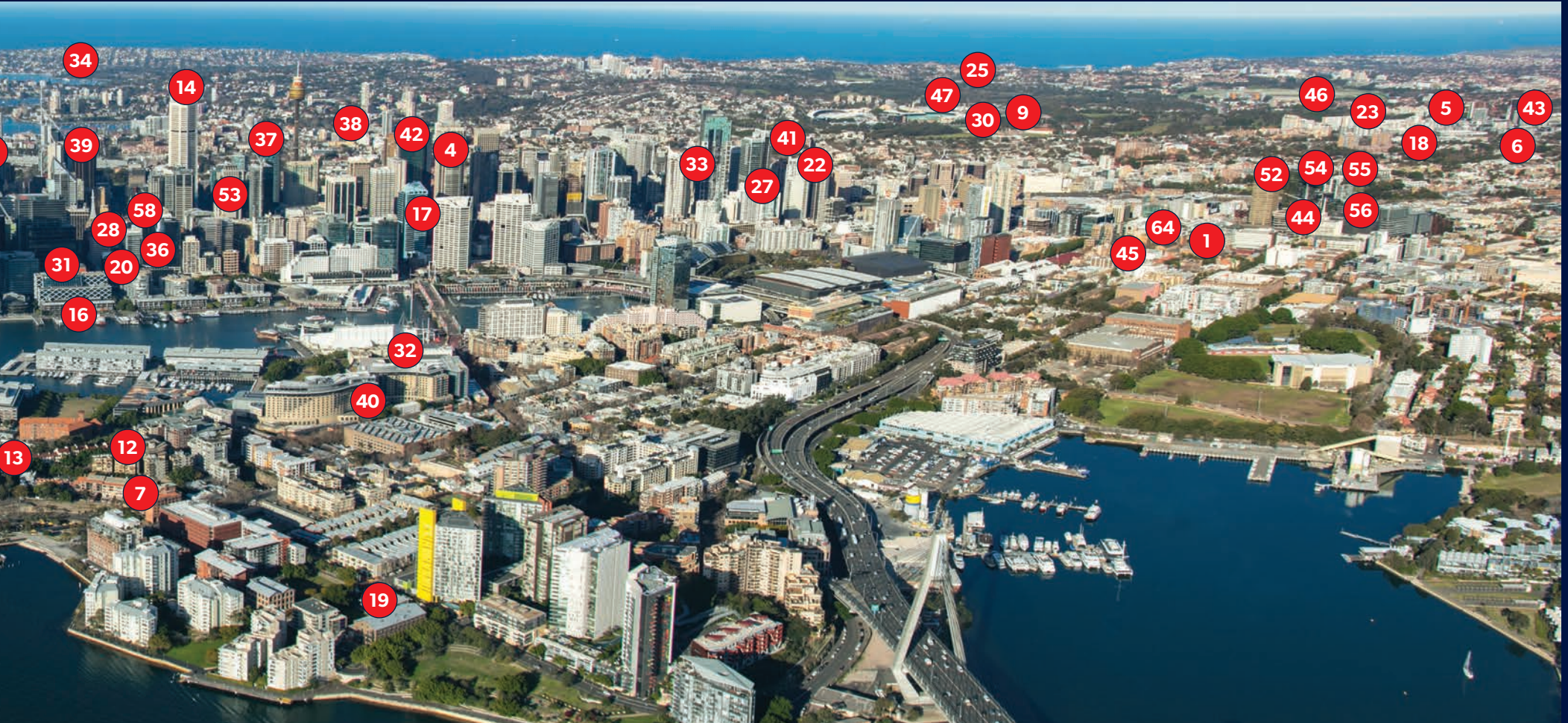
WITHOUT THE SUPPORT AND CONTRIBUTION OF OUR CLIENTS AND WITHOUT THE CHALLENGES THAT THEY HAVE SET, WE WOULD NOT BE WHERE WE ARE TODAY





- | | | | |
|---|--|---|--|
| 1. Nanoscience Hub, Camperdown, Sydney University | 10. Wharf 8 & 9, Multiplex | 20. Kent Street, Sydney, Grocon | 30. Cirque du Soleil, Moore Park |
| 2. Phillip Street, Civil & Civic | 11. Wharf 6 & 7, Multiplex | 21. Hickson Road, Lipman | 31. KENS Project, Leightons |
| 3. Establishment Hotel, Multiplex | 12. Bauhaus Apartments, Multiplex | 22. St Margaret's, Darlinghurst, Grocon | 32. The Atrium, Boulderstone |
| 4. Citibank, Multiplex | 13. Watermark Hotel, Multiplex | 23. Gadigal Avenue, Zetland, Grocon | 33. 420 Pitt Street, Meriton |
| 5. Waterloo, Meriton | 14. Babworth Estate, Grocon | 24. Luna Park, Multiplex | 34. Kambala School, Rosebay |
| 6. Victoria Park, Zetland, Landcom | 15. Jones Bay Wharf, Multiplex | 25. Bondi, Grocon | 35. St Patricks Estate, Manly, Lend Lease |
| 7. Watermark Pavilion, Multiplex | 16. Wharf 9 & 10, Multiplex | 26. Berry Street, North Sydney, Multiplex | 36. York Street, Petlex Management |
| 8. Cove Apartments, Grocon | 17. Dixon Street, Grocon | 27. 136 Hay Street, Anson Group | 37. Mid City Centre, George Street, Bovis Lend Lease |
| 9. ACI, Moore Park, Meriton | 18. Zetland, Buildcorp | 28. King Street, Ganellan | 38. Liverpool Street, Grocon |
| | 19. Jacksons Landing, Bovis Lend Lease | 29. Macquarie Street, Grocon | |

SYDNEY, THE FIRST 21 YEARS



- 39. 1 Bligh Street, Grocon
- 40. Star City Casino, APP
- 41. Campbell Street, Meriton
- 42. ANZ Building Castlereagh Street, Grocon
- 43. Victoria Park, Zetland, Hutchinson Builders
- 44. UTS Building 11, Reed Construction
- 45. Chau Chak Wing, AW Edwards
- 46. Royal Randwick Racecourse, Brookfield Multiplex

- 47. Sydney Cricket Ground, AW Edwards
- 48. Monte St Angelo Mercy College, Farrell Coyne Projects
- 49. EY Centre, 200 George Street, Mirvac
- 50. 177 Pacific Highway, Chatswood, Leightons
- 51. Arthur Street, North Sydney, Meriton
- 52. Block 11, Chippendale, Frasers Property Group
- 53. ARC, 161 Clarence Street, Crown Group

- 54. Duo, Central Park, Frasers Property Group
- 55. Australian Technology Park 1, 2 and 3
- 56. Australian Technology Park, Locomotive Sheds, Eveleigh, Mirvac
- 57. Denison Street, North Sydney, Winten Property Group
- 58. Wynyard Place, Multiplex
- 59. One Circular Quay, AW Group
- 60. Sandstone Precinct, Built

- 61. Quay Quarter Lanes, Loftus Lane, Richard Crookes
- 62. Circular Quay Tower, Lend Lease
- 63. Quay Quarter Tower, Multiplex
- 64. Charles Perkins Centre, Camperdown, Sydney University

ENVIRONMENT & BEST PRACTICE

COMMUNITY

Mainland Civil is a company with strong family and community values, having a deep understanding of and commitment to corporate governance requirements. As a good corporate citizen, we are actively involved in the wider community, its interests and activities; as such, we support numerous community groups both financially and through encouraging employee participation in community activities.

Mainland Civil's Board and Management are committed to the principles of ethical corporate governance. We are constantly mindful of our responsibilities as guardians of the natural environment, while performing profitably in the built environment and enhancing the amenity and quality of life of the broader community.

ENVIRONMENT

Mainland Civil recognises that caring for our environment is vital; as such, we are committed to ensuring the highest standards of environmental excellence in everything we do. Mainland Civil is fully compliant with ISO 14001: Environmental, Management. Our achievements in environmental management have been recognised with peak industry awards over many years.

We are committed to minimising our impact on climate change through auditing and controlling our greenhouse gas emissions, our overall carbon footprint and energy efficiency.

Mainland Civil's efforts in environmental excellence have been recognised through our successful participation in the CCF Earth Awards – the most prestigious awards in civil infrastructure – with our achievements including state winner and national finalist.



THE CCF **EARTH** AWARDS
FOR EXCELLENCE IN CIVIL CONSTRUCTION

ACCREDITATIONS



SUBCONTRACTORS

Mainland Civil maintains prequalification criteria for all subcontractors and suppliers. All subcontractors and suppliers must have systems and procedures that ensure Mainland Civil's quality and EHS requirements will be achieved on all projects without compromise. Subcontractors and suppliers must be prequalified to Mainland Civil's prequalification criteria before commencing on site and are audited regularly to ensure adherence to our high standards.

ACCREDITATIONS

Mainland Civil Group has been independently accredited by TQCSI in the following:

- Safety – ISO 45001:2018 Management Systems
- Environmental – ISO 14001:2015 Environmental Management Systems
- Quality – ISO 9001:2015 Quality Management Systems

Mainland Civil Queensland Pty Ltd:

- Q-COMP Workplace certification of Rehabilitation Policy and Procedures

Industrial Relations

- Current CFMEU Enterprise Bargaining Agreement NSW, QLD, VIC & ACT

Licensing

Mainland Civil Queensland Pty Ltd:

- Master Builders Trade Alliance
- Contractor Licence (Foundation Work – Piling & Anchors) 1183637
- Demolition Licence – Workplace Health and Safety Queensland
- Q-COMP Workplace certification of Rehabilitation Policy and Procedures

Mainland Civil Pty Ltd:

- Contractor License (Excavator, Underpinning & Piering) – Fair Trading NSW
- Demolition Licence – SafeWork NSW
- Asbestos Removal (friable & non-friable) – SafeWork NSW

Membership

Mainland Civil Pty Ltd:

- Civil Contractors Federation
- Master Builders NSW

Mainland Civil Queensland Pty Ltd:

- Civil Contractors Federation
- Master Builders QLD

Pre Qualifications

Mainland Civil Pty Ltd:

- RMS – Roads and Maritime Service – Road & Bridge Works
- NSW Government Works
- CM3 Prequalification



Mainland Civil Pty Ltd

192-194 Railway Parade
Kogarah NSW 2217
PO Box 529 Kogarah NSW 2217

Phone: (02) 8566 1111
Fax: (02) 8566 1100

Mainland Civil Queensland Pty Ltd

Unit 7, 61-63 Commercial Drive
Shailer Park QLD 4128
PO Box 3655 Loganholme QLD 4129

Phone: (07) 3297 4700
Fax: (07) 3297 4799

Mainland Civil VIC Pty Ltd

41 Cobden Street
North Melbourne VIC 3051
PO Box 1734 Melbourne VIC 3001

Phone: (03) 9614 7775
Fax: (02) 8566 1100

Wollongong Office/Yard

149 Five Islands Road
Cringila NSW 2502
PO Box 529 Kogarah NSW 2217

Phone: (02) 8566 1111
Fax: (02) 8566 1100

